

OLGA RAMSEY

INTERIOR DESIGN

CONTENT

DESIGN PROJECTS

- Palm Springs Residence
- San Francisco Hotel
- Oil+Water Retail Store
- Palladium Residences (HBA Project)
- Japanese Onsen Spa

OTHER

- AutoCAD & Revit
- Sketches

PALM SPRINGS RESIDENCE

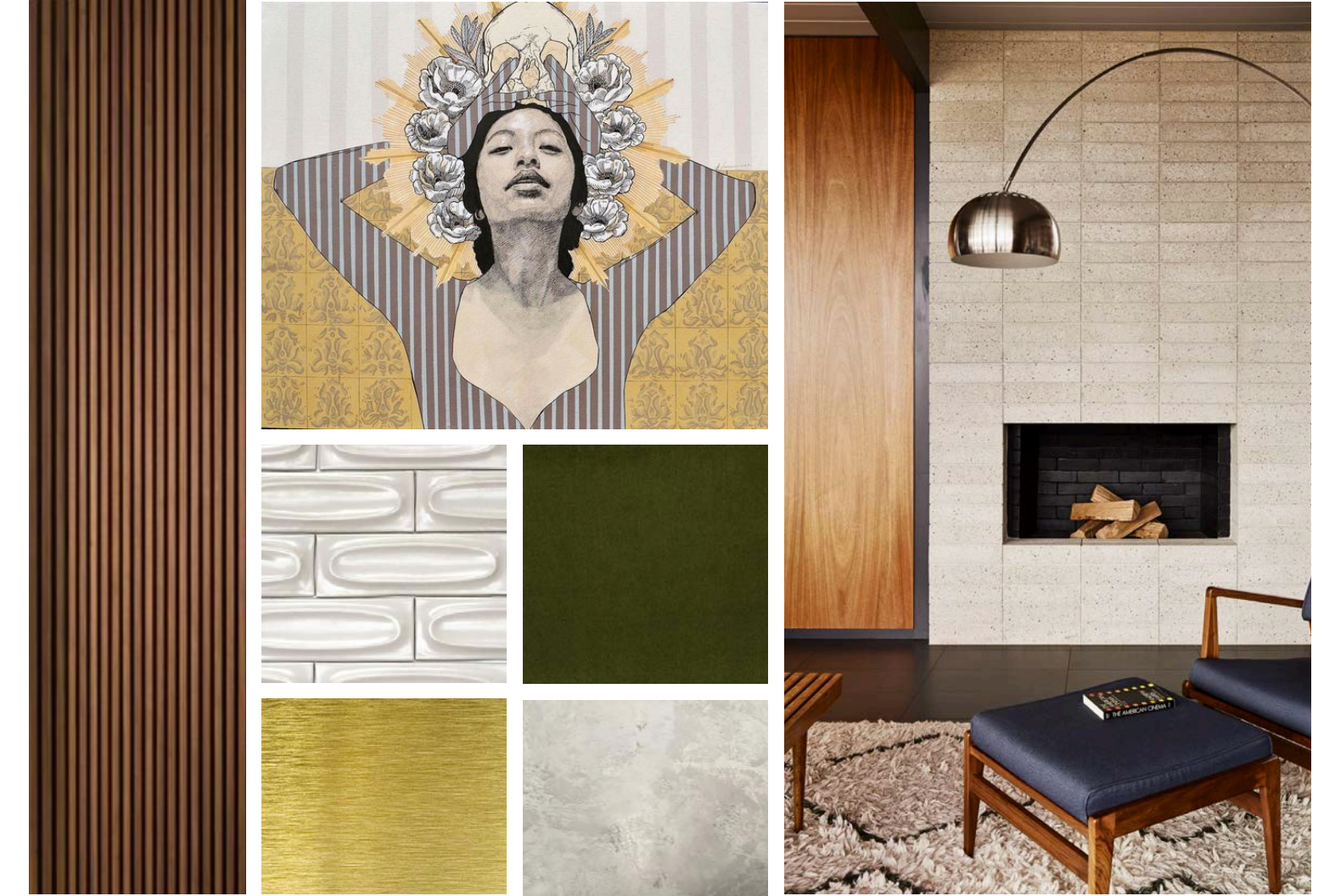
RESIDENTIAL DESIGN

PROJECT DETAILS:

For this project, I was assigned to provide interior design services for new home construction in Palm Springs, California. The house will be occupied by a family of three: two parents and their 10-year-old daughter.

CONCEPT:

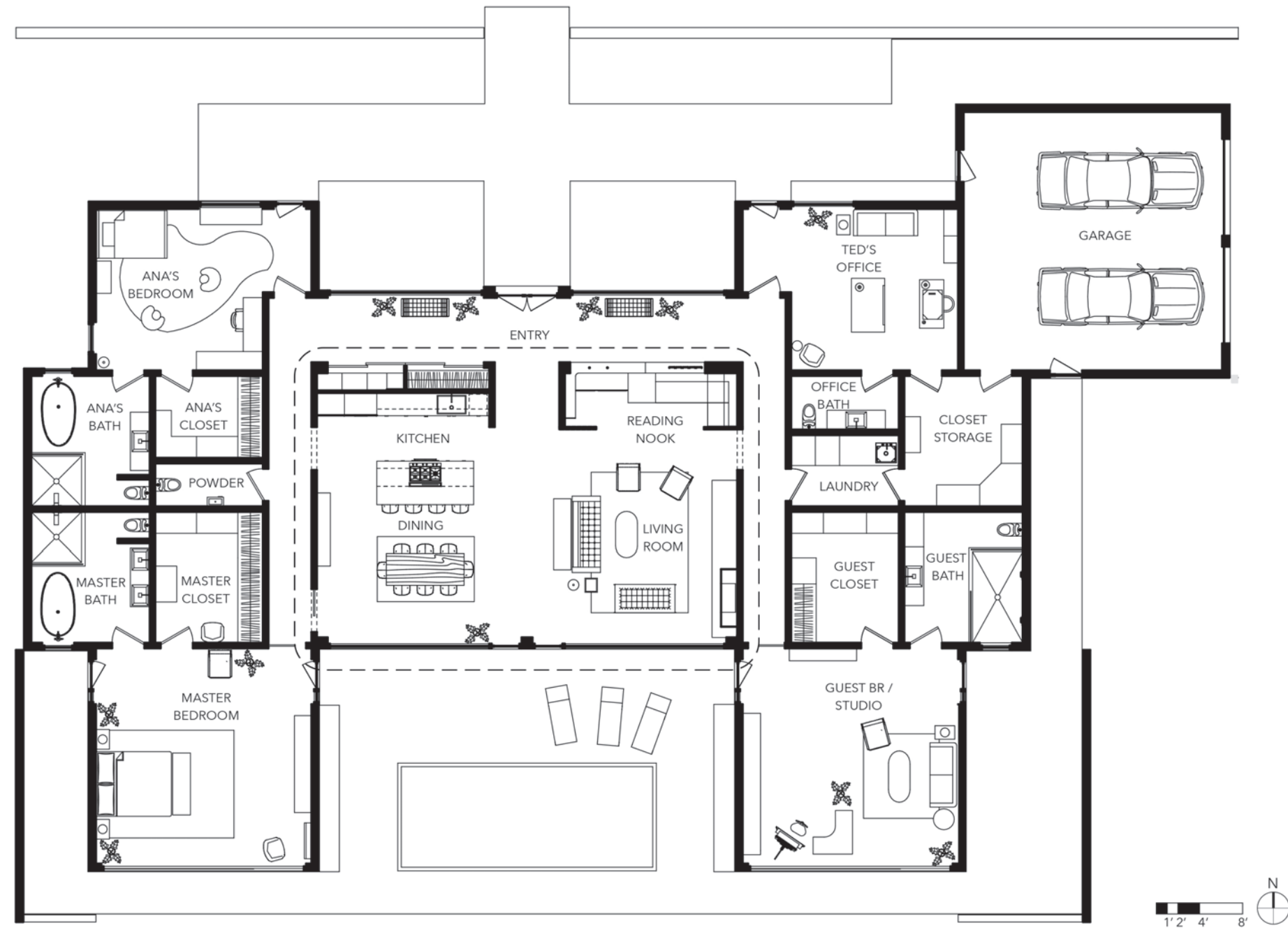
The proposed design will reflect mid-century modern style of architecture to best accommodate client's style requirements. Space will be kept open with a lot of natural light. The design will utilize clean horizontal and vertical lines in combination with organic forms and textures. The design will be simple, uncluttered, and functional, but also will be playful and fun to better accommodate family environment.



PALM SPRINGS RESIDENCE

FLOOR PLAN

- 4,000 sq feet
- South orientation
- Family rooms in the west wing
- Office and studio in the east wing
- Studio doubles as guest bedroom
- Clear pathway from garage to kitchen



LIVING ROOM



Edward Wormley Sofa 'b' in Ash



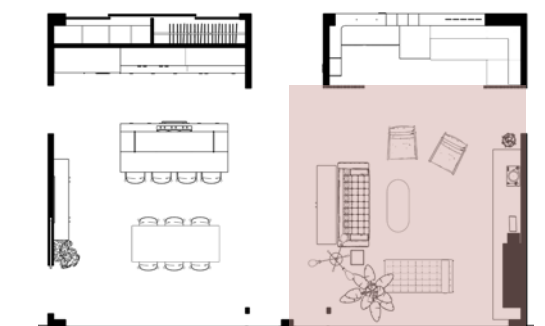
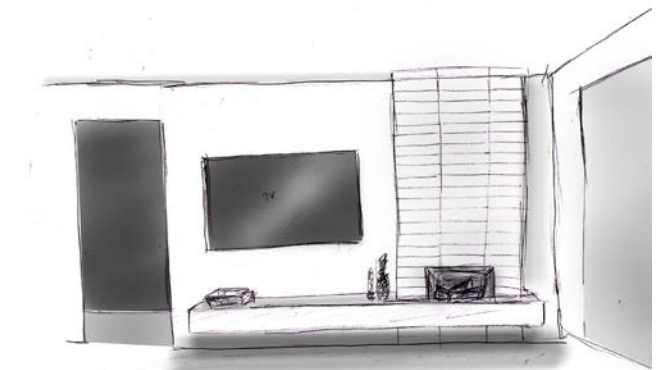
Hudson Armchair in Moss Leather



Credenza by Hans J. Wegner

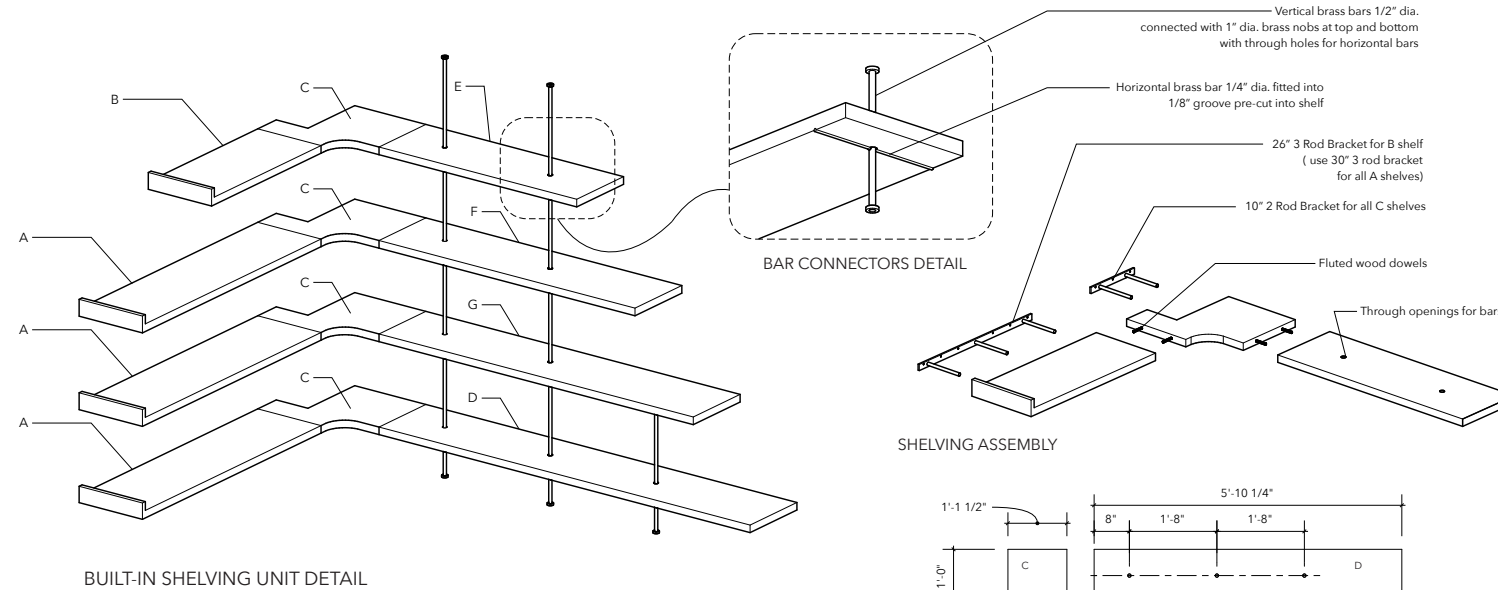
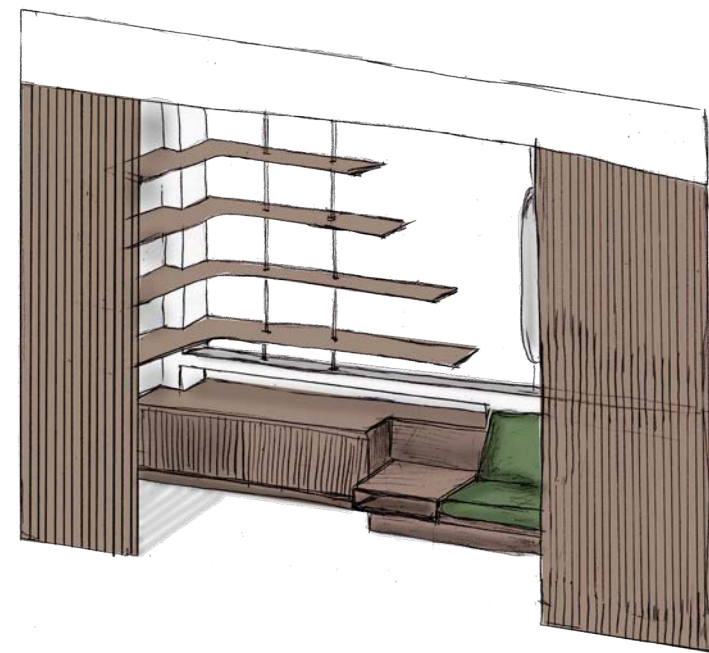
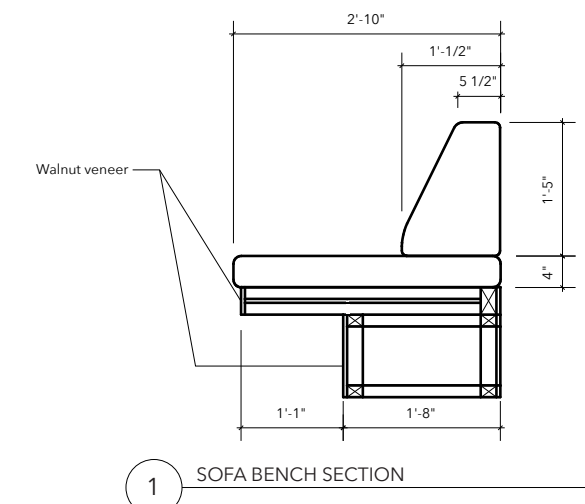
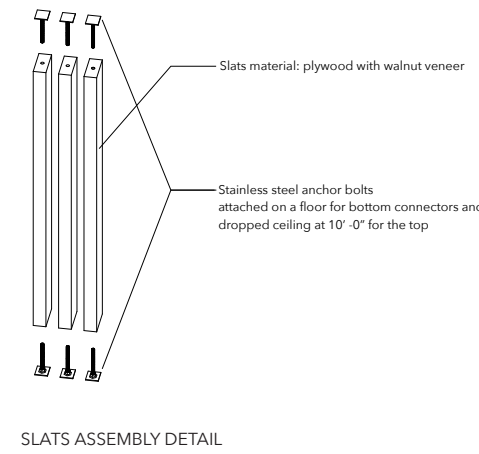
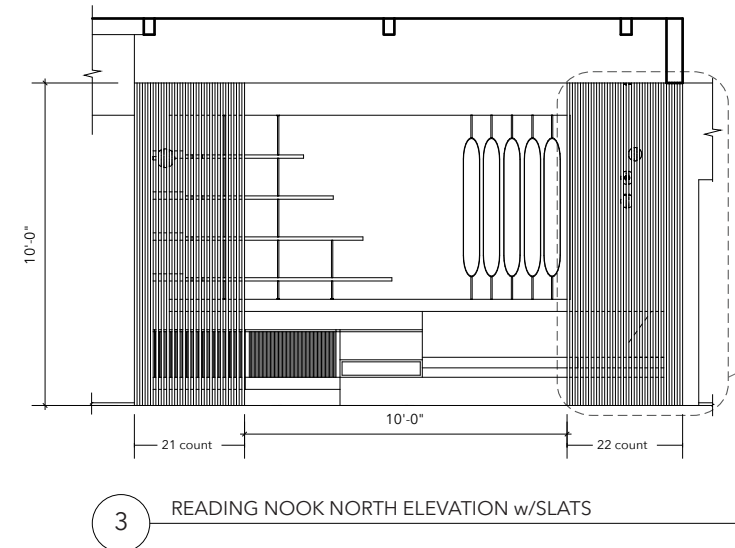
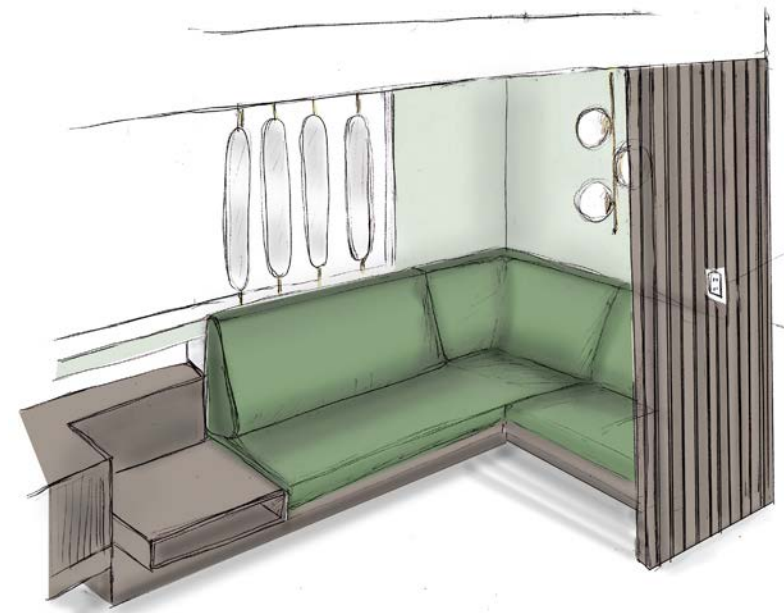


Marble Coffee Table

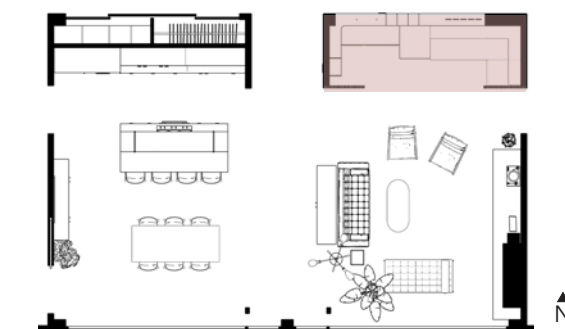
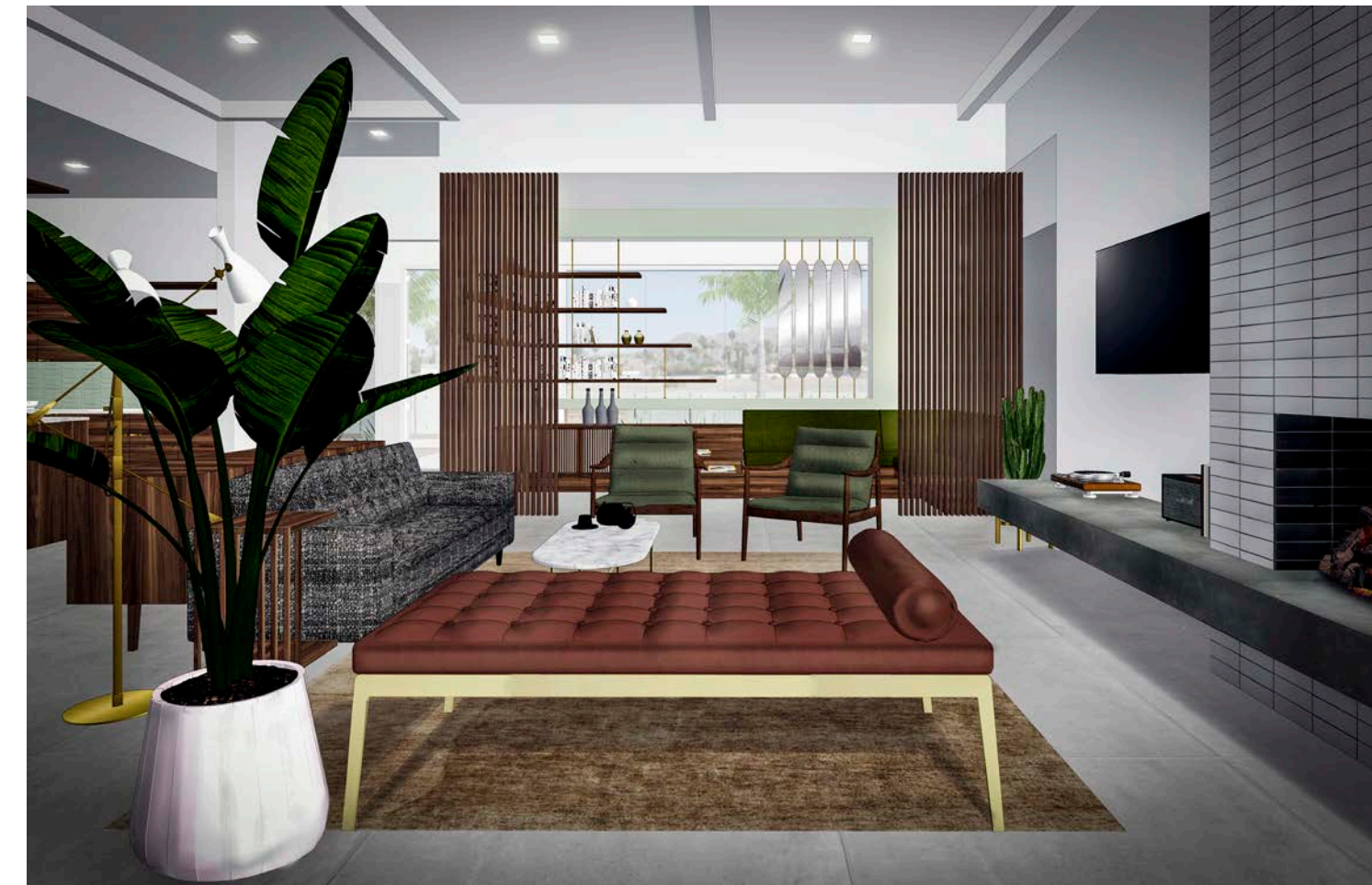
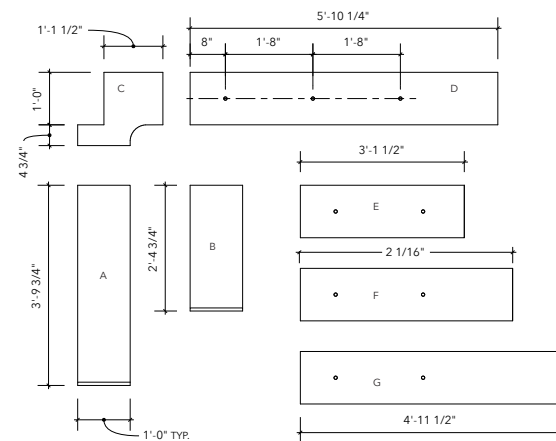
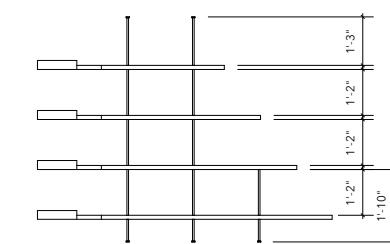
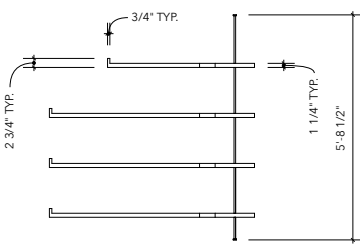


PALM SPRINGS RESIDENCE

CUSTOM DESIGN - READING NOOK

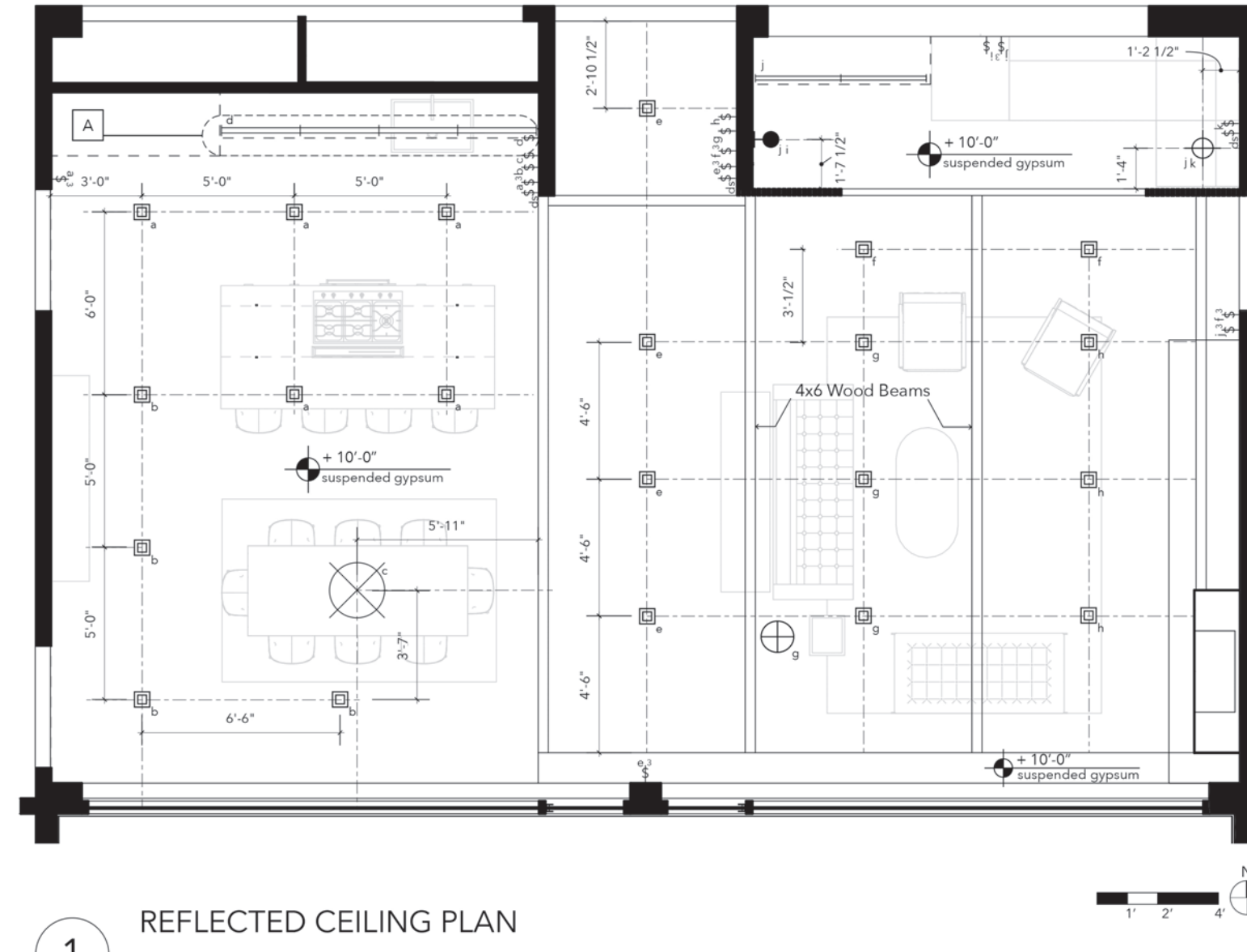


BUILT-IN SHELVING UNIT DETAIL



PALM SPRINGS RESIDENCE

MATERIALS & LIGHTING



Stanley Floor Lamp



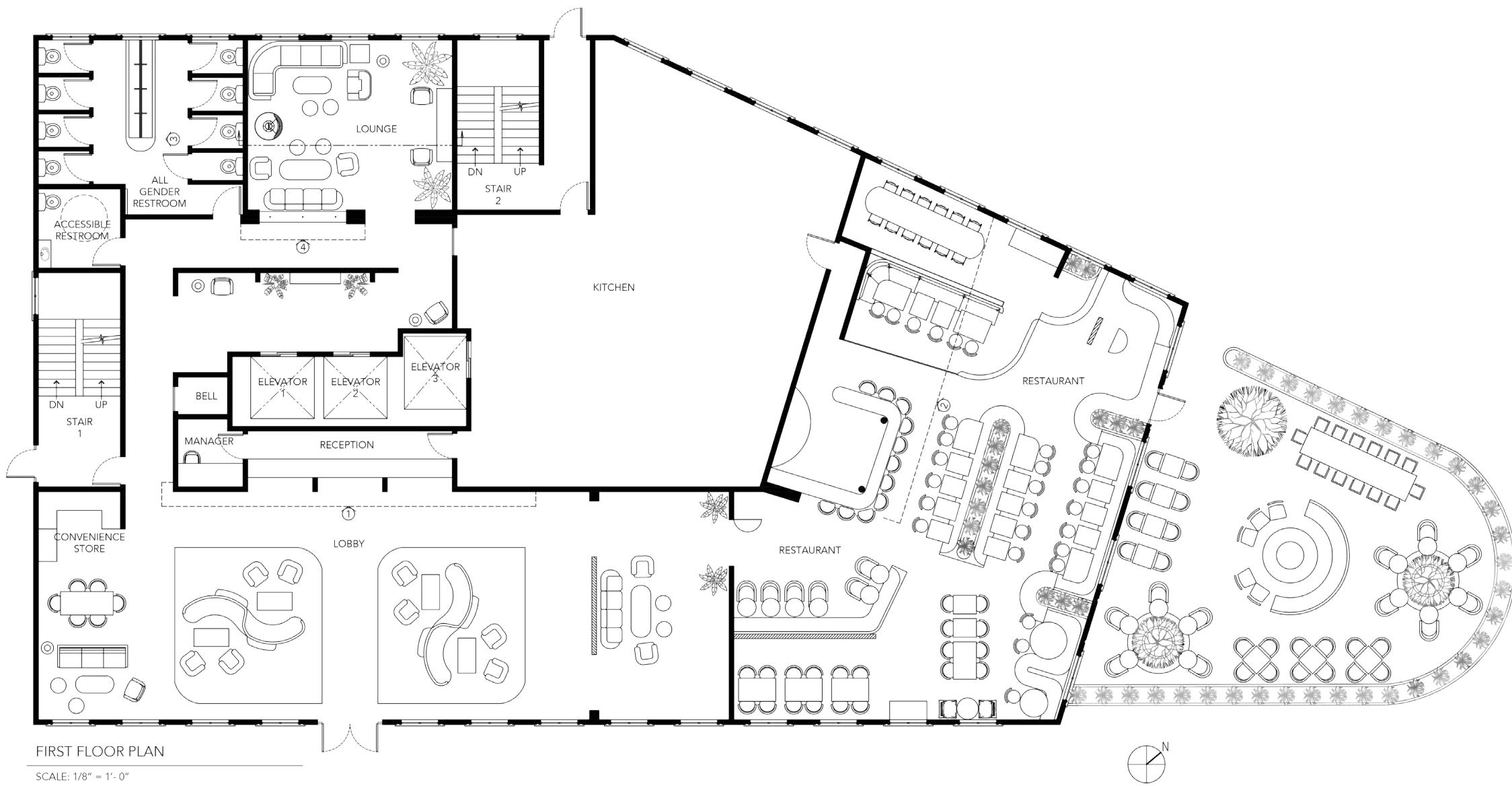
Bow-Tie Chandelier



Bloom Pendant

SAN FRANCISCO HOTEL

MAIN FLOOR PLAN



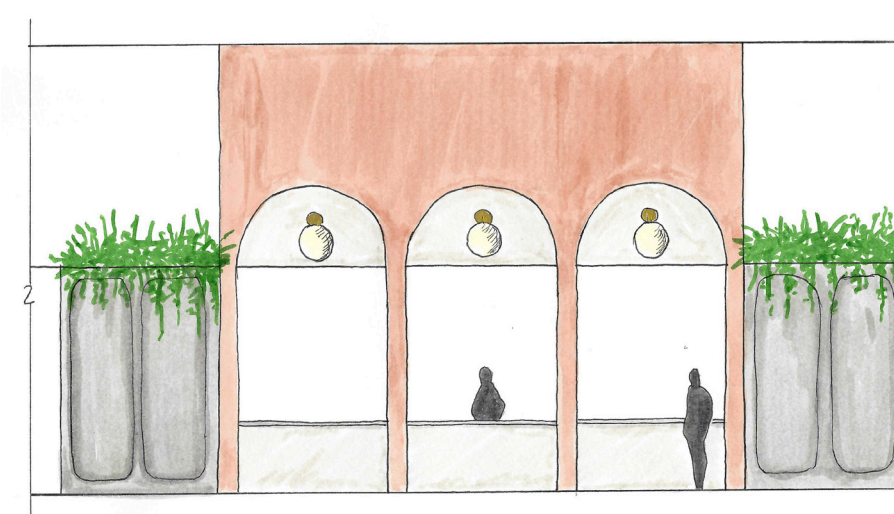
FIRST FLOOR PLAN

SCALE: 1/8" = 1'-0"

DESIGN DEVELOPMENT SKETCHES



RESTAURANT



RECEPTION DESK ELEVATION



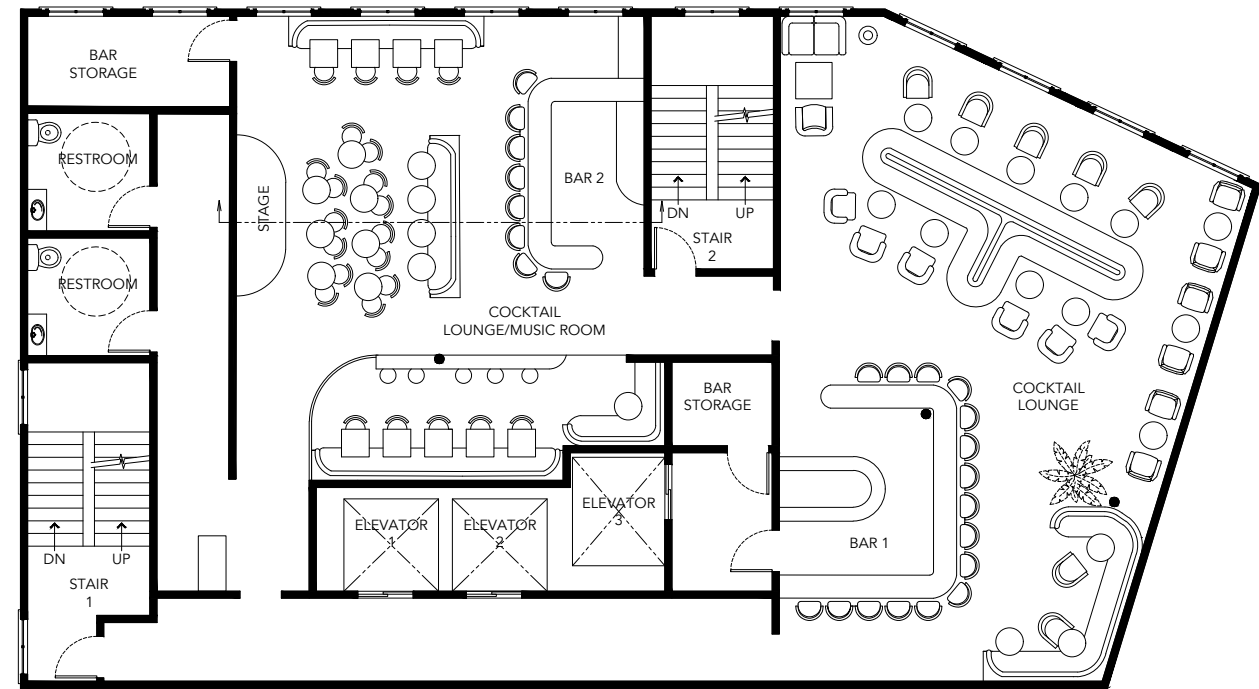
HOTEL LOBBY WITH CEILING DETAIL

SAN FRANCISCO HOTEL

COCKTAIL LOUNGE DESIGN

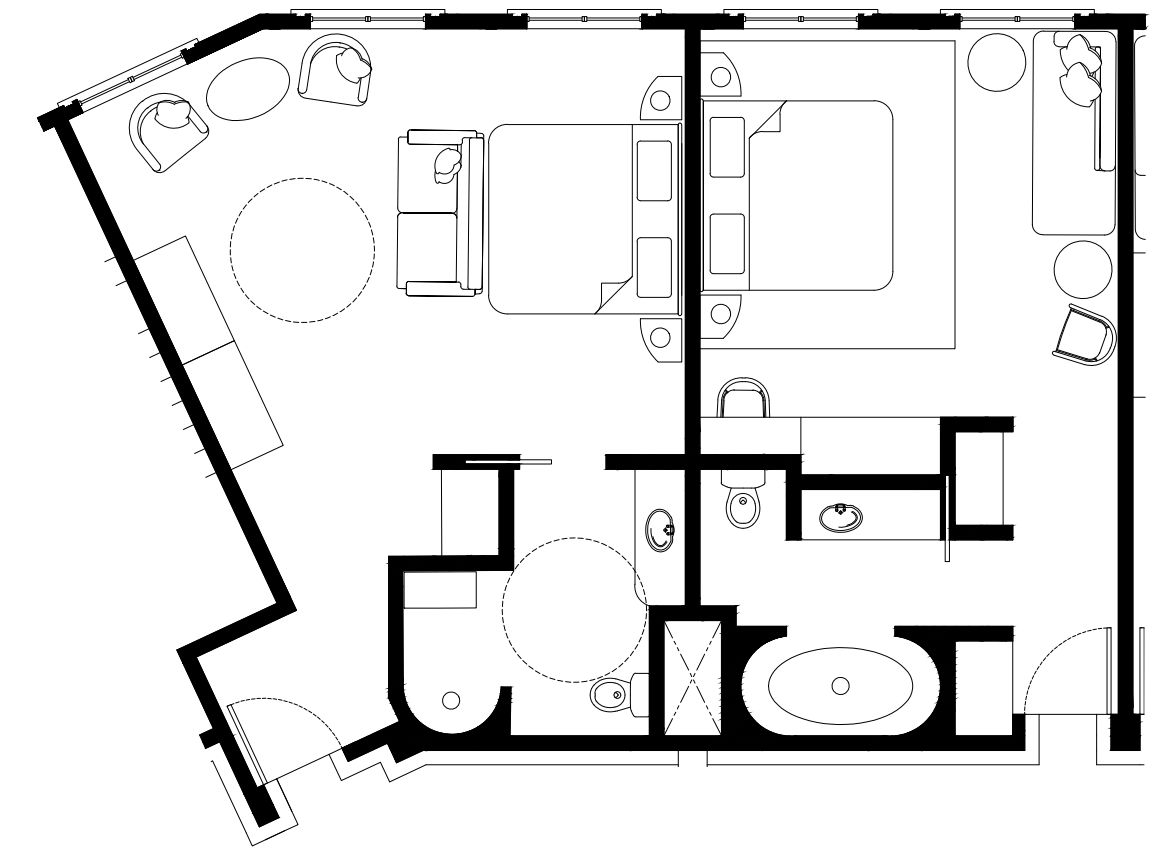
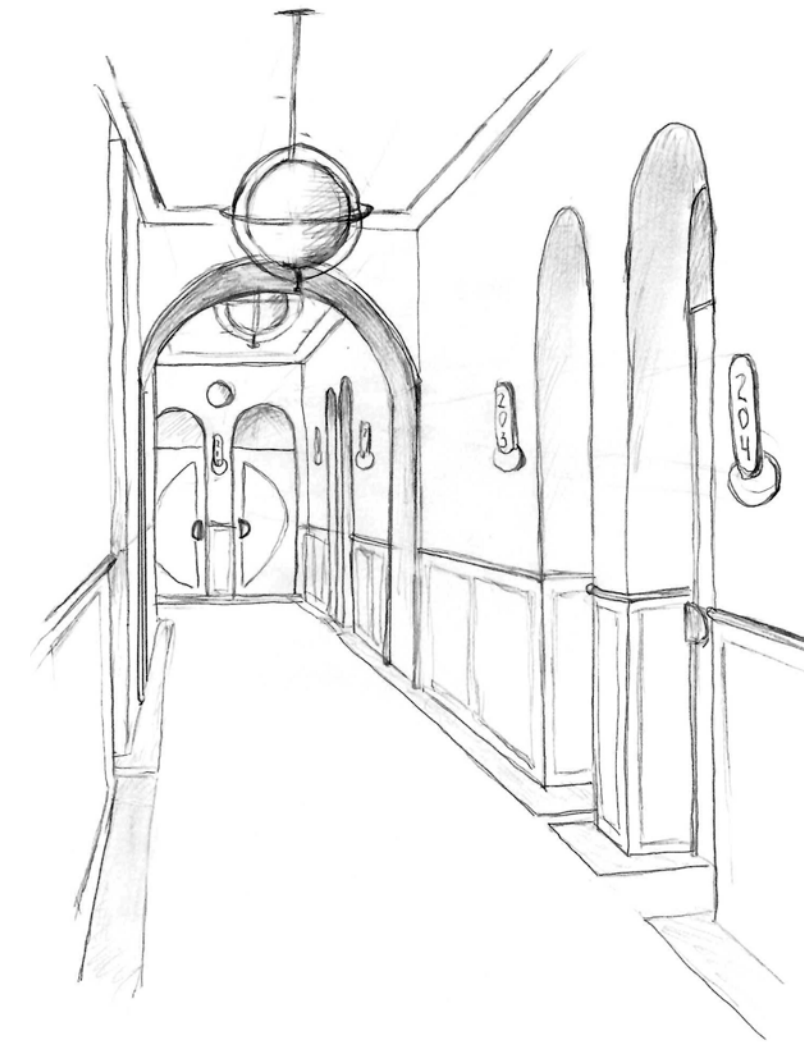


MUSIC ROOM LOUNGE SEATING



SECOND FLOOR COCKTAIL LOUNGE FLOOR PLAN

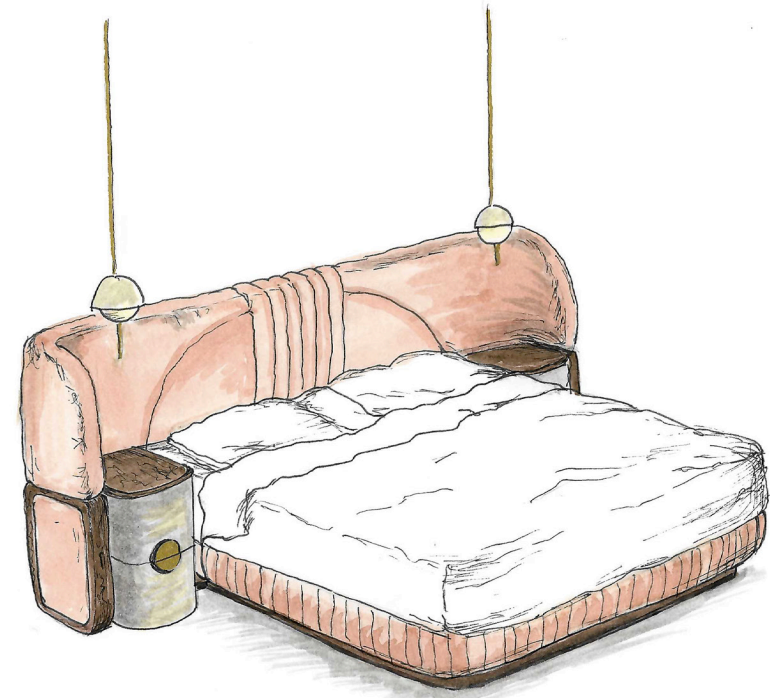
GUESTROOM & CORRIDOR DESIGN



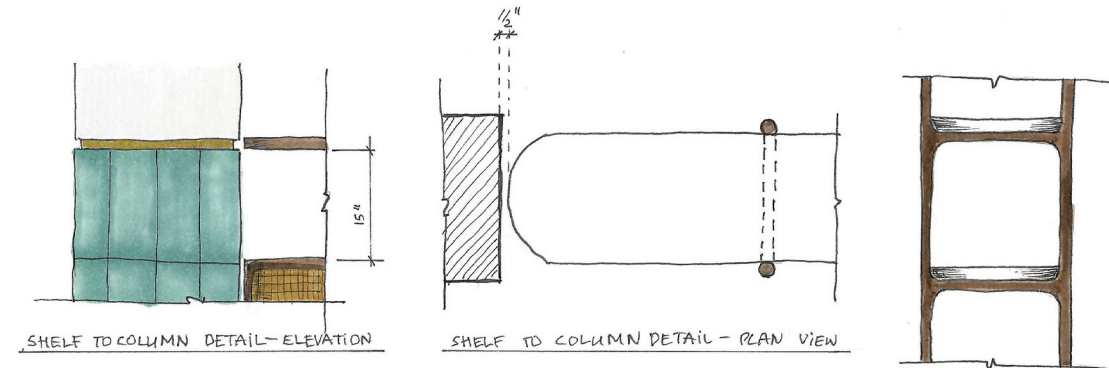
ACCESSIBLE KING & KING GUESTROOMS PLAN
SCALE: 1/4" = 1'-0"

SAN FRANCISCO HOTEL

CUSTOM FURNITURE DESIGN

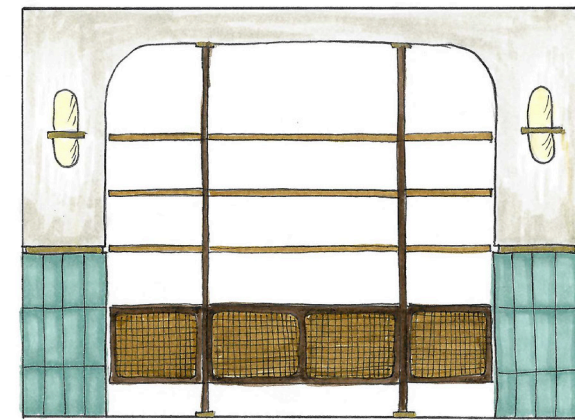


CUSTOM BED WITH BUILT-IN SIDE TABLES

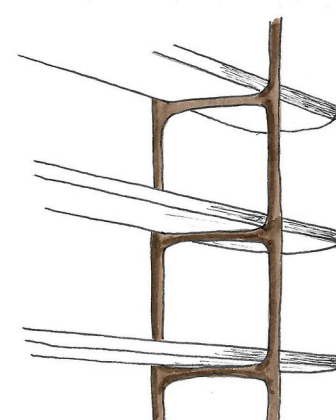


SHELF TO COLUMN DETAIL - ELEVATION

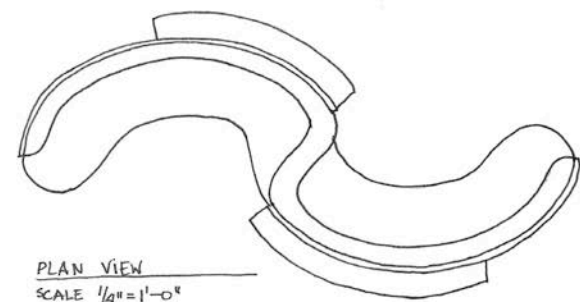
SHELF TO COLUMN DETAIL - PLAN VIEW



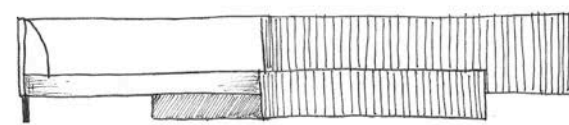
LOUNGE BUILT-IN SHELVING ELEVATION



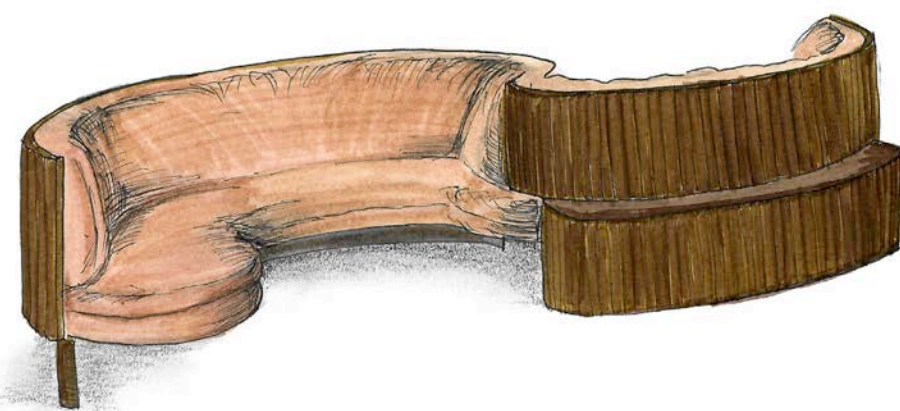
SHELF BRACKET DETAIL



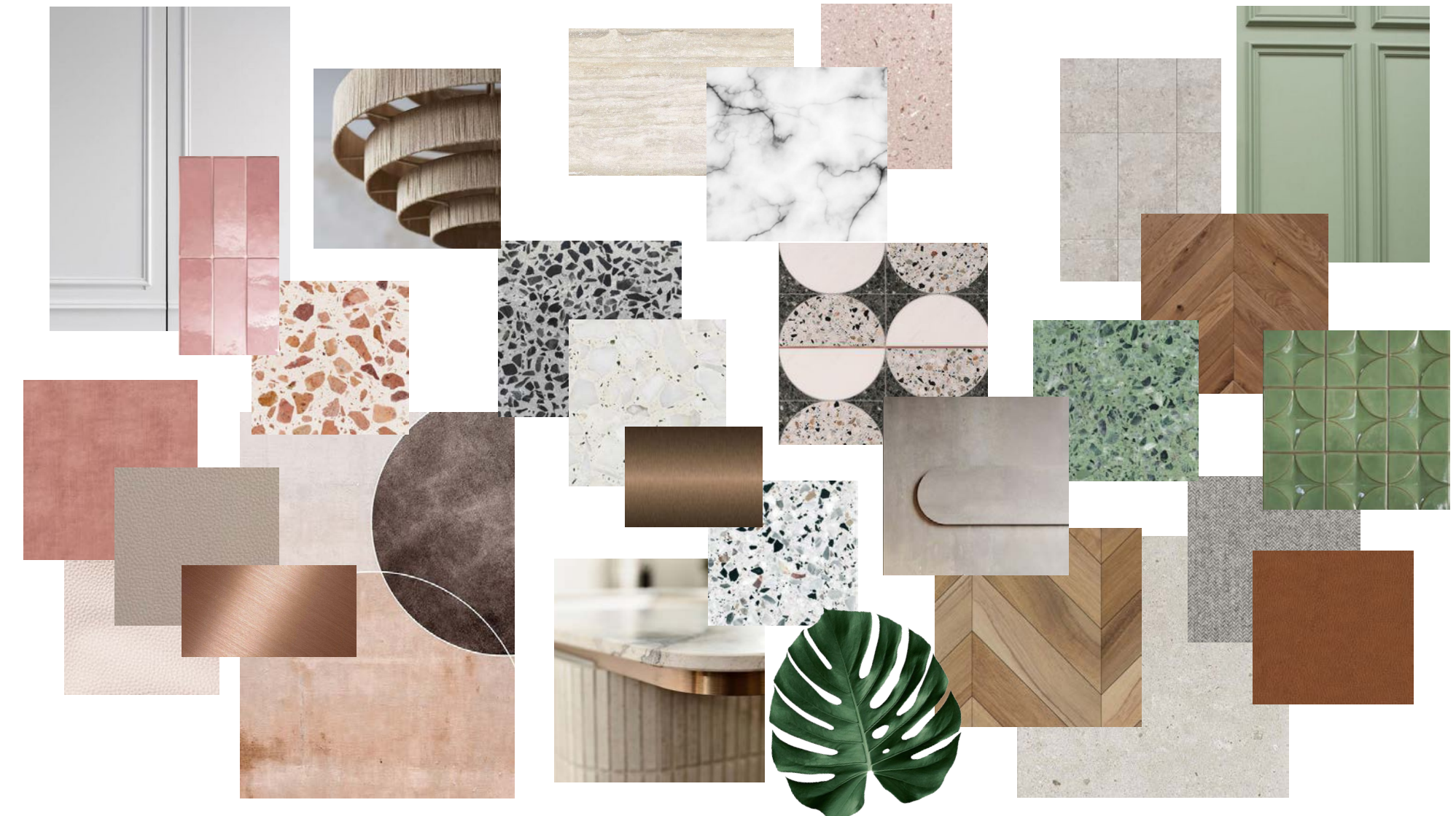
PLAN VIEW
SCALE 1/4" = 1'-0"



CUSTOM BENCH DESIGN



MATERIALS PALETTE



OIL+WATER STORE

RETAIL STORE DESIGN

PROJECT DETAILS:

For this project, I was assigned to provide a conceptual design for a high-end store that sells handmaid brushes, oil and watercolor paints, and varnishes for artists. For phase one of the project, I was assigned to design a pop-up shop to test a concept for the store. The second phase of the project was to create a permanent flagship store design, including the exterior and interior of the building.

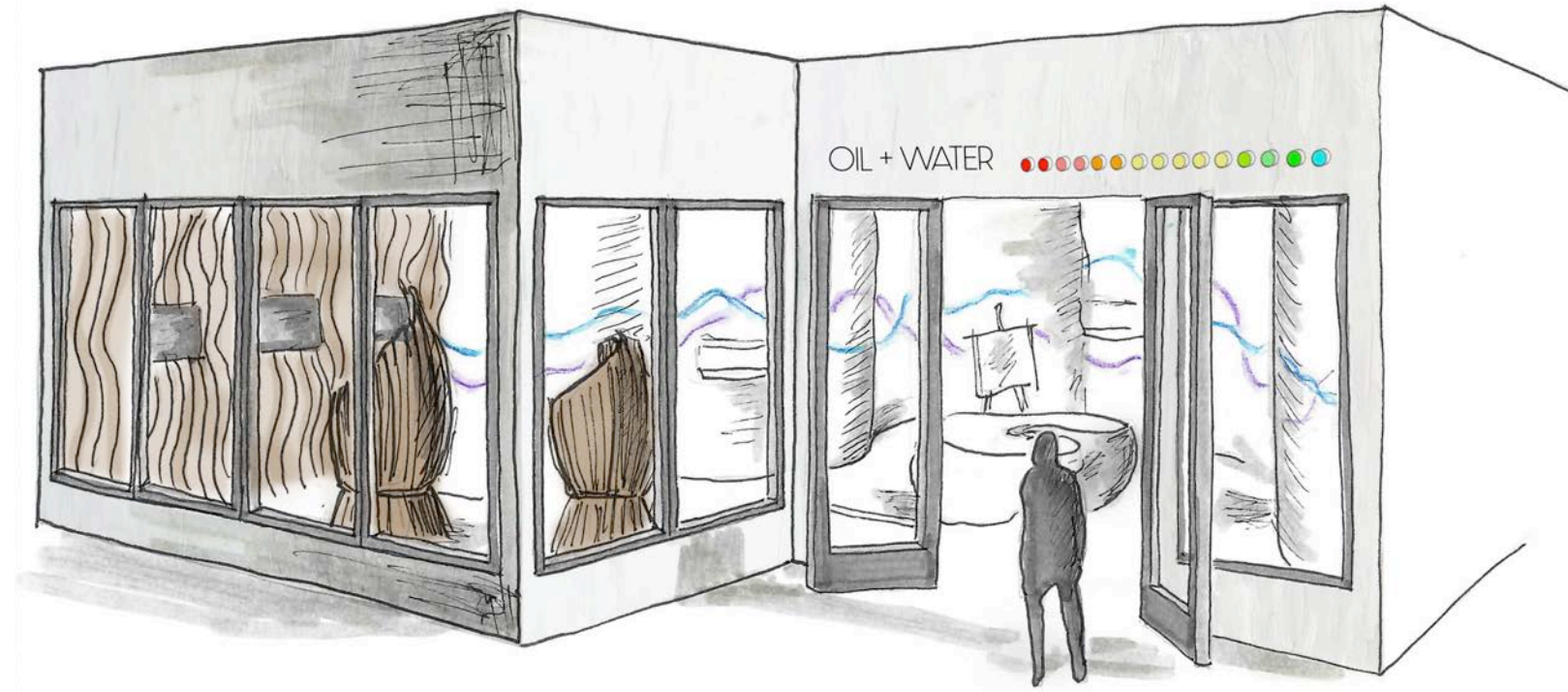
CONCEPT:

Create an innovative design that will highlight the high-end and artistic qualities of the products. Spaces are designed to evoke a feeling of being in a modern art gallery through the use of non-conventional materials, lighting, and contemporary digital elements.



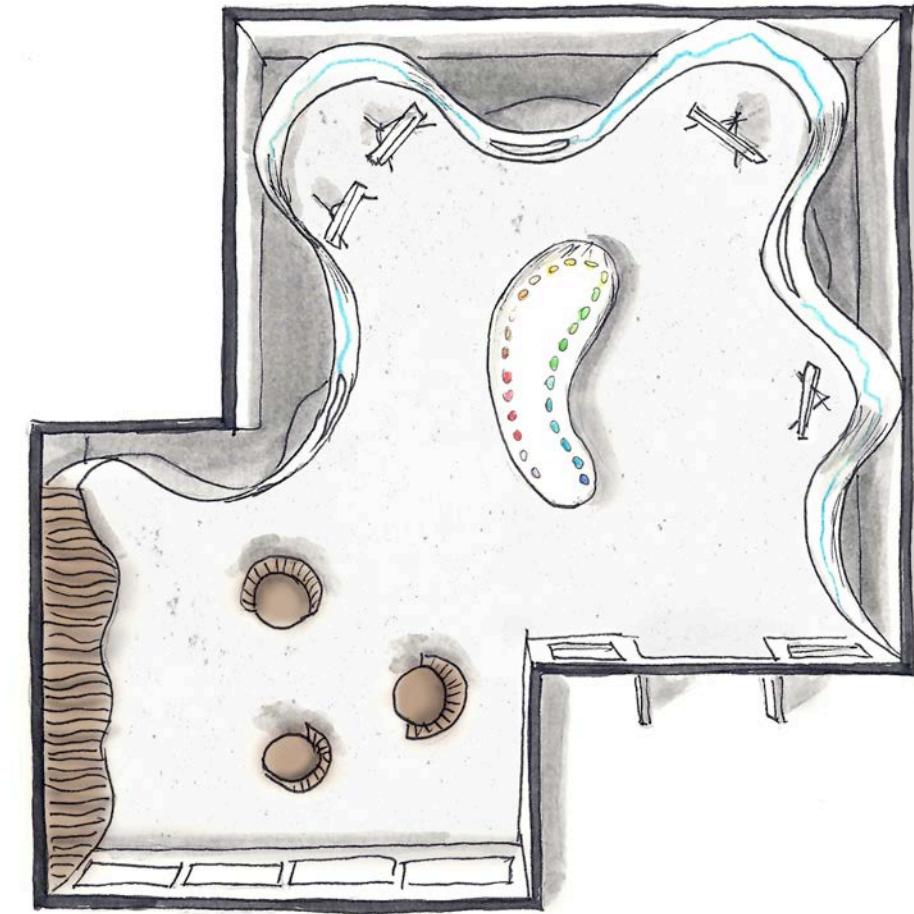
OIL+WATER POP-UP STORE

EXTERIOR & INSPIRATION

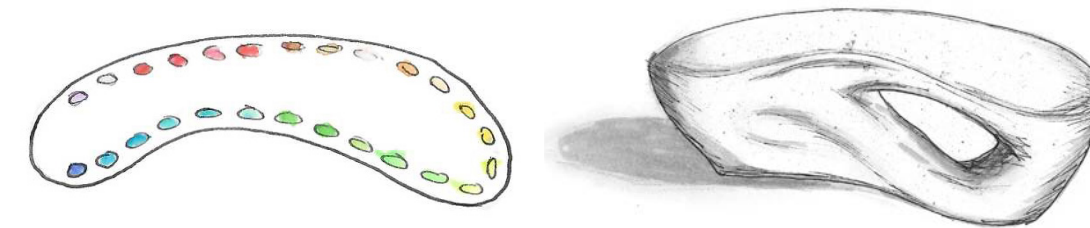


MATERIALS & INSPIRATION

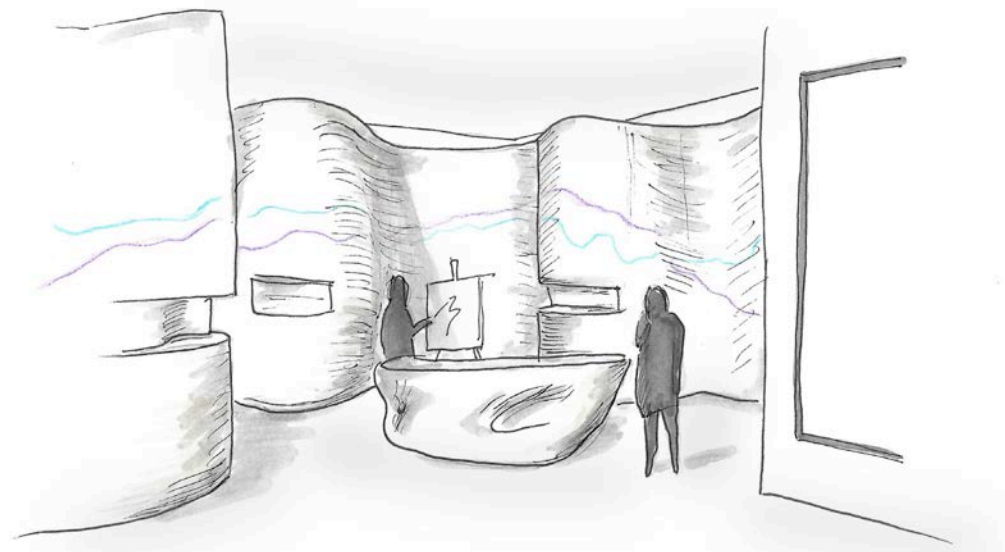
INTERIOR



FLOOR PLAN



CUSTOM PRODUCT DISPLAY DESIGN

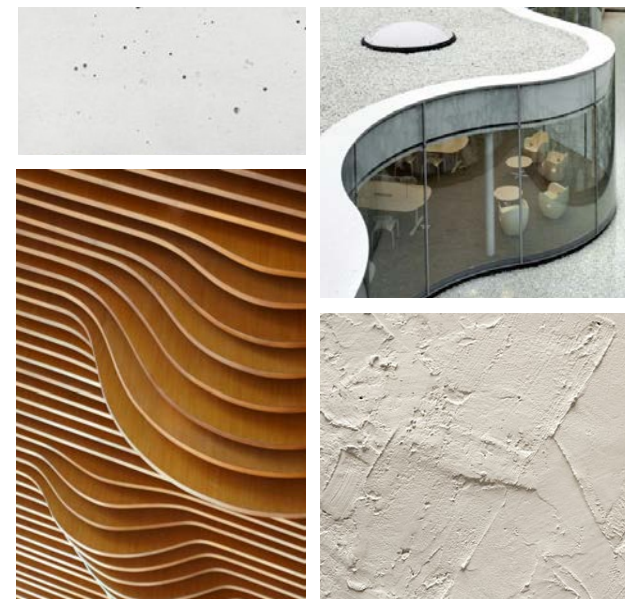
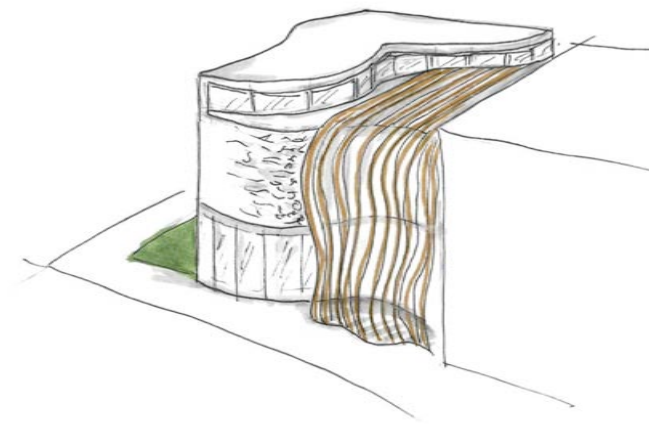


OIL+WATER FLAGSHIP STORE

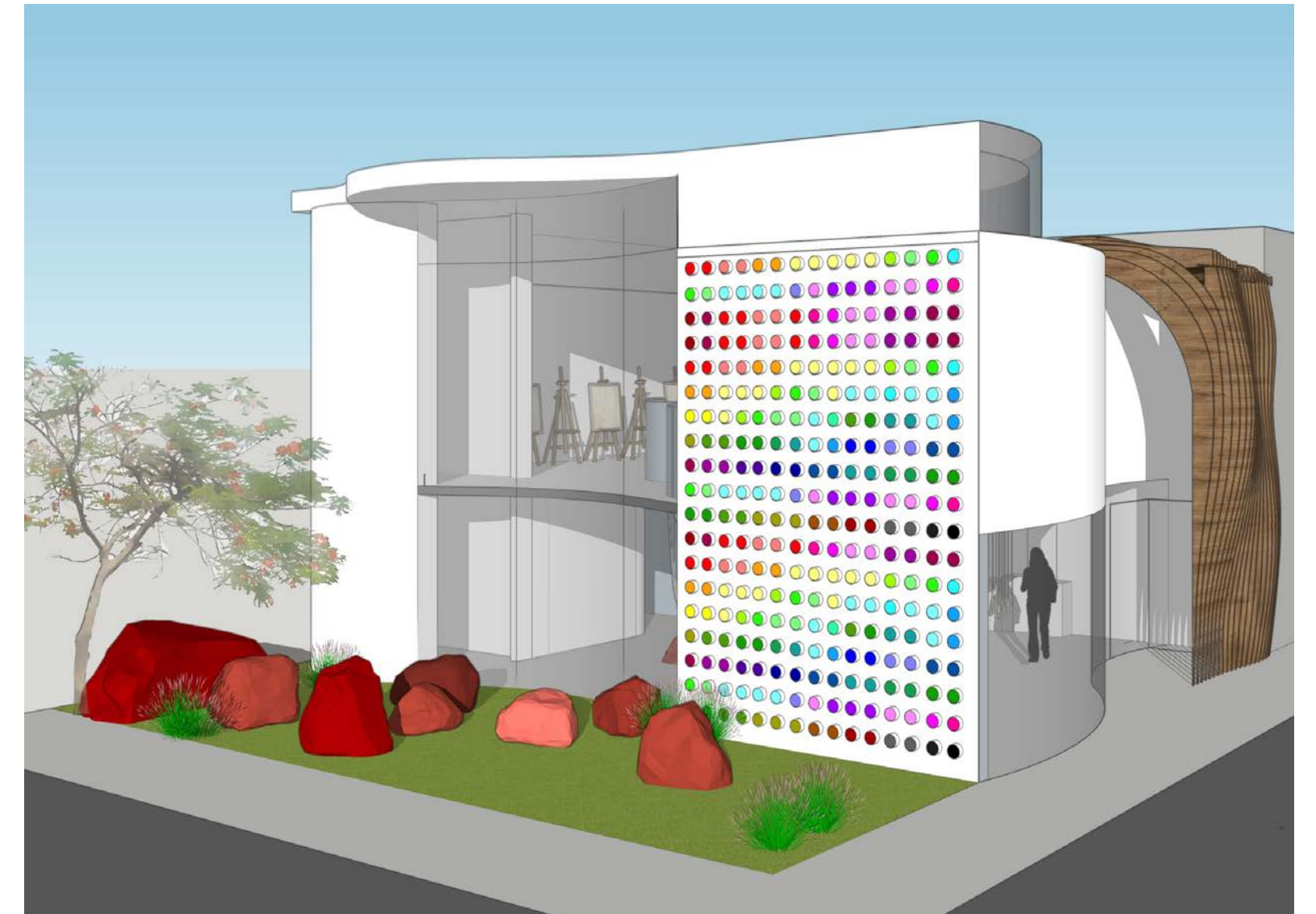
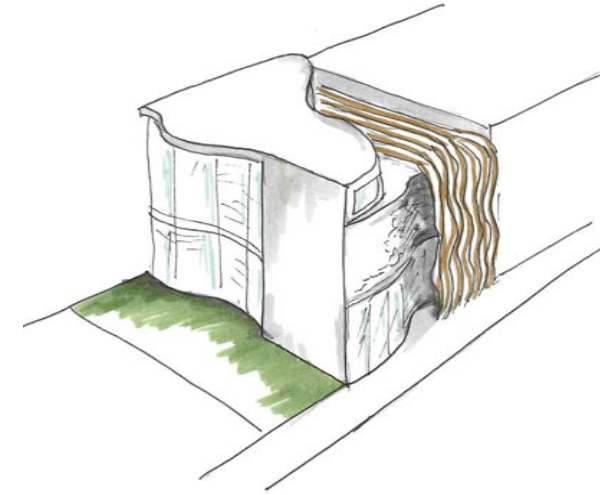
EXTERIOR



MAIN ENTRANCE



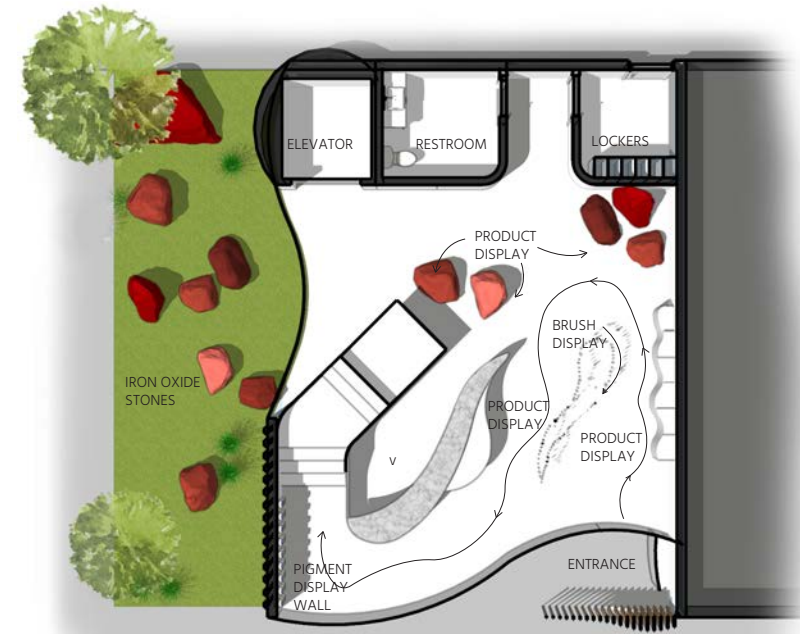
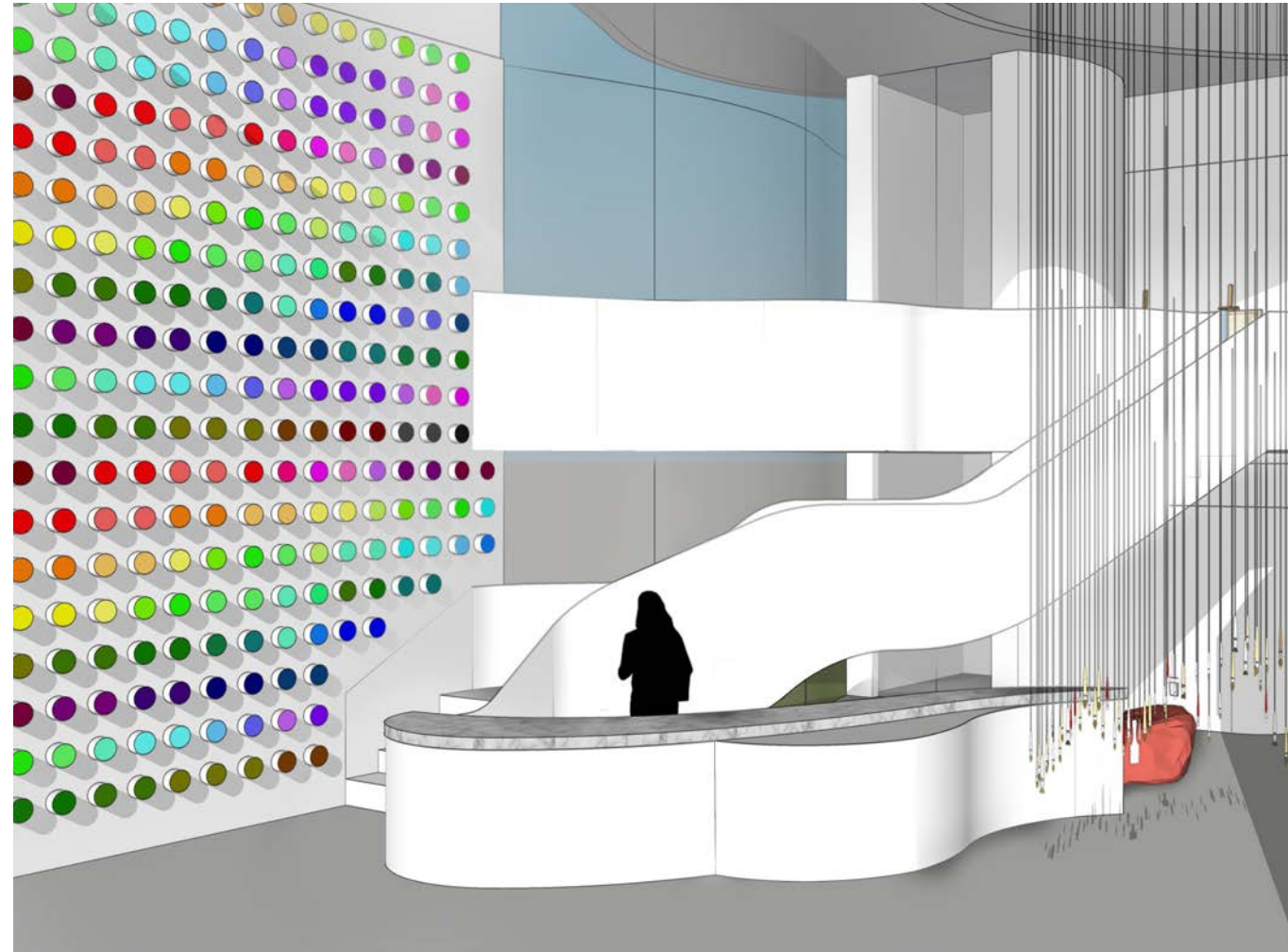
MATERIALS & INSPIRATION



FEATURE WALL AND GREEN SPACE

OIL+WATER FLAGSHIP STORE

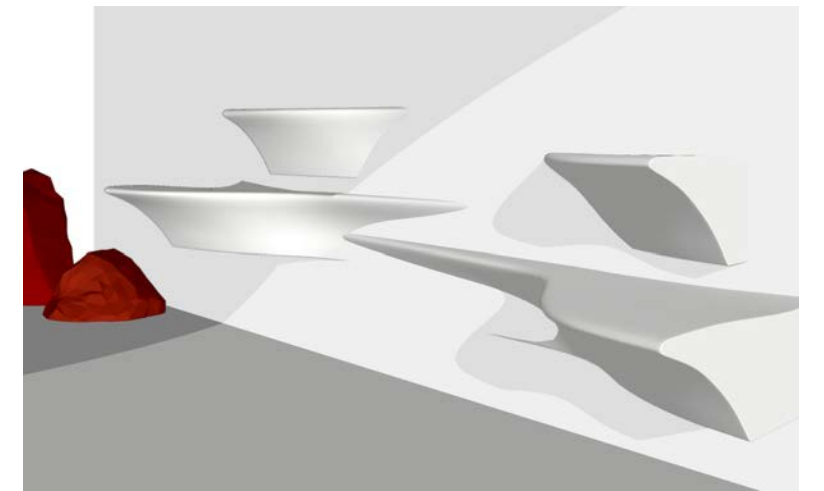
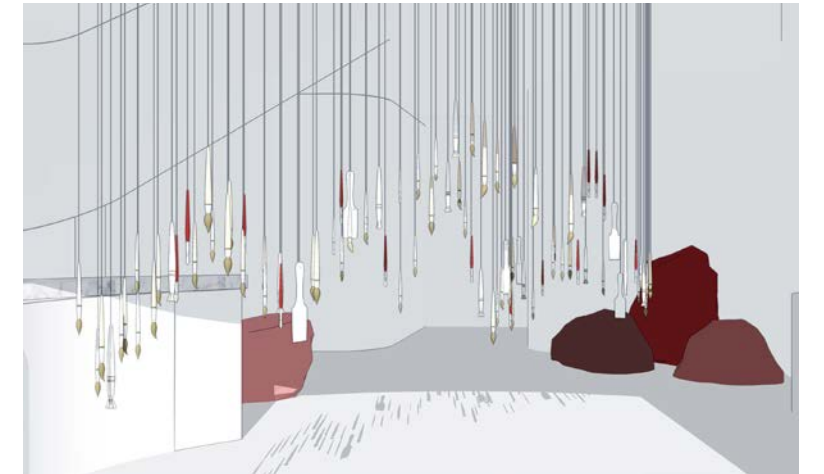
INTERIOR



FIRST FLOOR PLAN



SECOND FLOOR PLAN



MATERIALS & INSPIRATION

PALLADIUM RESIDENCES (HBA)

MULTI-FAMILY RESIDENTIAL DESIGN

PROJECT DETAILS:

Palladium Residences is planned to become a two 32-story towers with 731 residential units in Hollywood, Los Angeles designed by HBA. The residence will include 4 public amenity floors. Built above the iconic Palladium theater it will attract creative, young, and active LA crowd. The design will be fresh and contemporary, but with a touch of original Streamline Moderne aesthetics.

RESPONSIBILITIES:

I worked as a Junior Designer along 2 Senior Designers and 1 Project Manager on Schematic Design and Design Development Stages of this project. My involvement included partial space design of specific areas and elements (e.g. coffee bar, kitchen area, restrooms etc.), assistance with 2D and 3D renderings, CAD, FF&E selection, presentation layouts, sourcing materials and setting up material palettes, creating specification documents and material schedule.



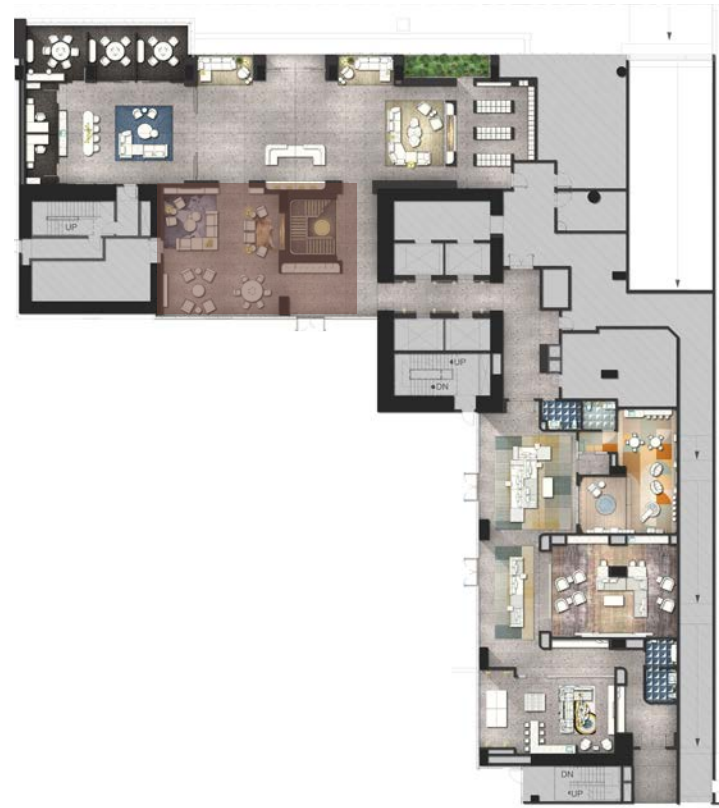
PALLADIUM RESIDENCES (HBA)

LOBBY LOUNGE & COFFEE BAR

- Designed North Elevation for Lobby lounge area with adjacent coffee bar.
- FF&E selection
- Directed rendering team on 3D rendering creation
- Elevation 2D rendering creation
- Material palette selection



LOUNGE & COFFEE BAR FLOOR PLAN



LEVEL 1 FLOOR PLAN



3D RENDERING VIEW OF THE SPACE
(NOTE: TECHNICAL PART OF RENDERING WAS COMPLETED BY ANOTHER TEAM MEMBER UNDER MY SUPERVISION)

INTERIOR ELEVATION & MATERIAL PALETTE



BUILT-IN SHELVING & COFFEE BAR ELEVATION

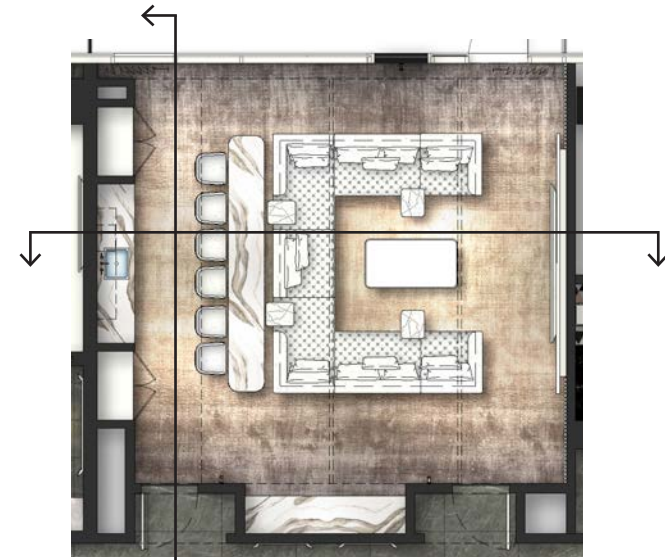


LEVEL 1 MATERIAL PALETTE

PALLADIUM RESIDENCES (HBA)

MEDIA ROOM

- Designed Media room space.
- FF&E selection.
- Directed rendering team on 3D rendering creation.
- Elevation 2D rendering
- Material palette selection



MEDIA ROOM FLOOR PLAN



MEDIA ROOM MATERIAL PALETTE



LEVEL 31 FLOOR PLAN



MEDIA ROOM MEDIA WALL 3D RENDERING VIEW
(NOTE: TECHNICAL PART OF RENDERING WAS COMPLETED BY ANOTHER TEAM MEMBER UNDER MY SUPERVISION)

INTERIOR ELEVATIONS



MEDIA ROOM KITCHEN ELEVATION



MEDIA ROOM ENTRANCE ELEVATION

JAPANESE ONSEN SPA

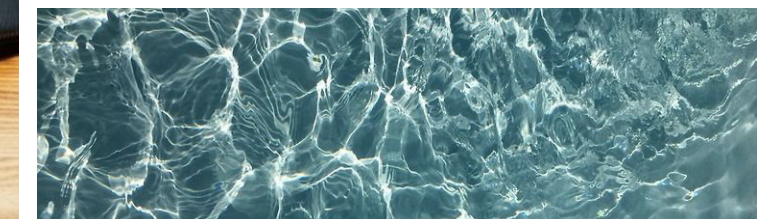
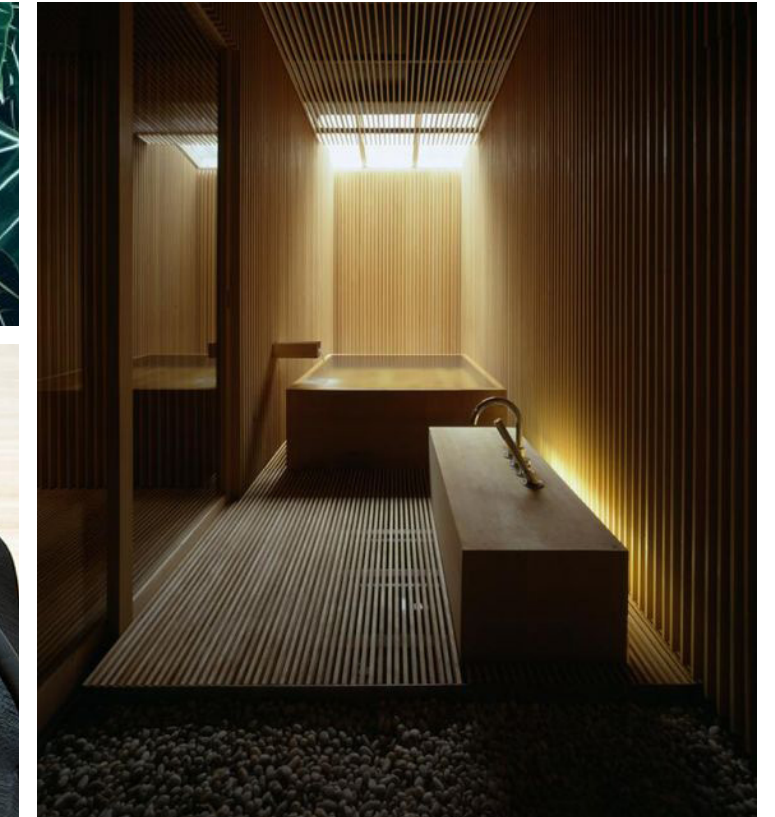
ARCHITECTURAL DESIGN CONCEPT

PROJECT DETAILS:

For this project, I was assigned to develop a three-dimensional design of a public space based on a two-dimensional abstract image.

CONCEPT:

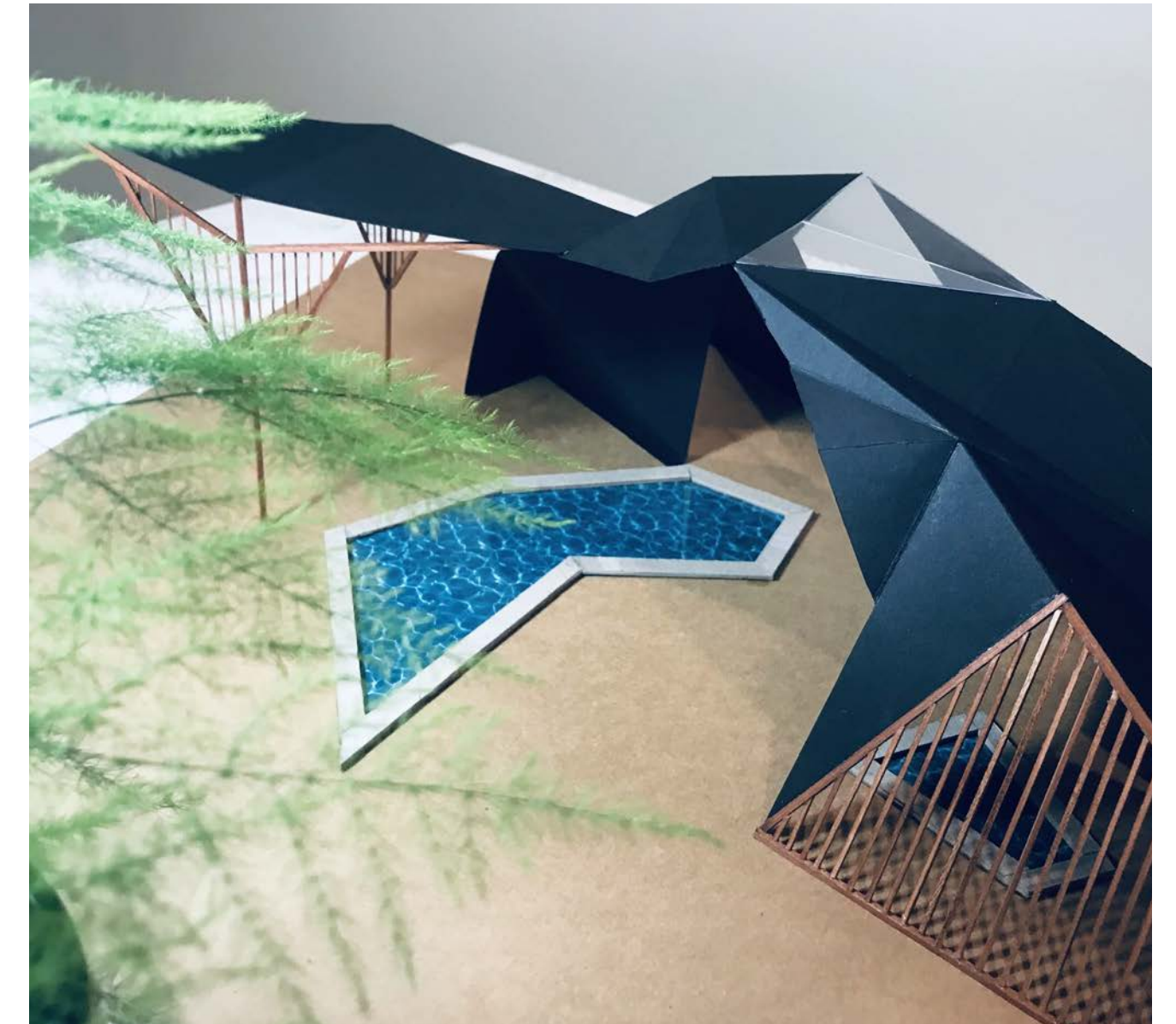
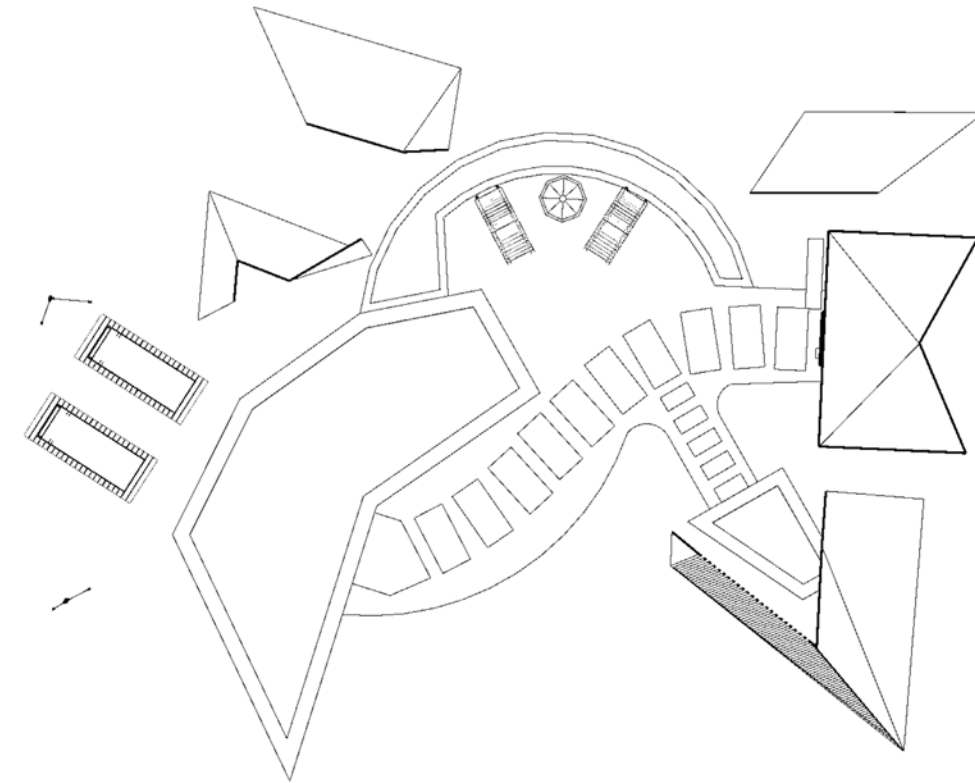
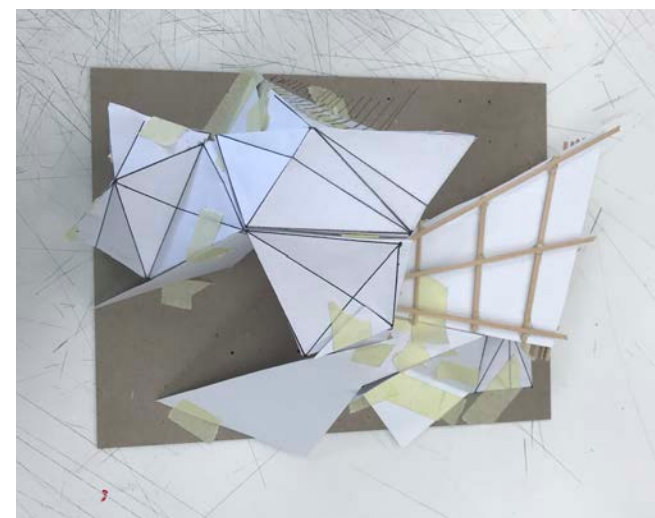
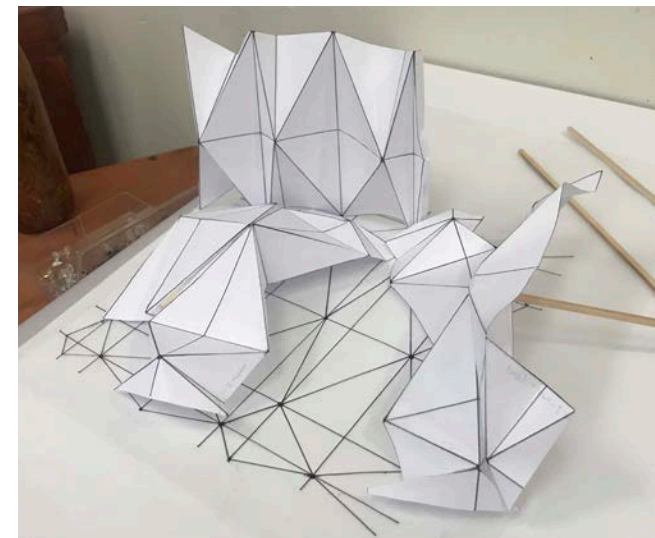
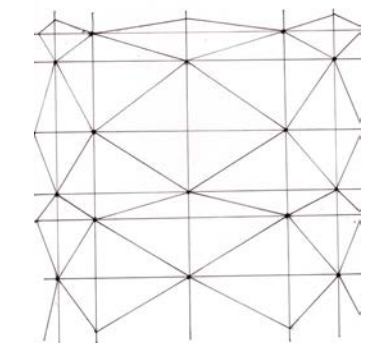
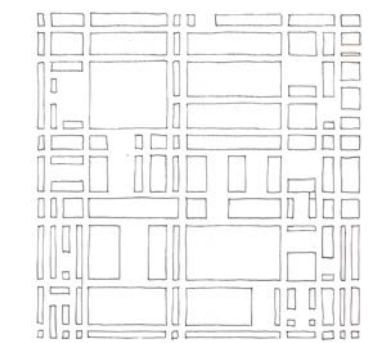
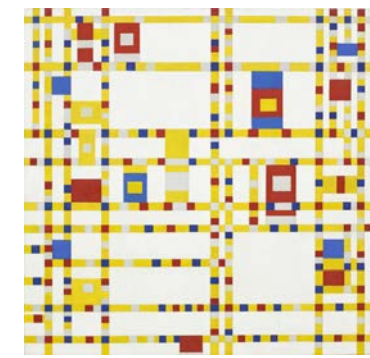
The proposed public space is a Japanese onsen spa located in the forest. It's a semi-open structure with its roof partially covering the hot springs pool. The proposed design is based on the Japanese traditional paper folding technique, origami. The design will integrate the surrounding environment to preserve the feeling of nature and will promote the feeling of tranquility and calm through the use of natural materials and textures.

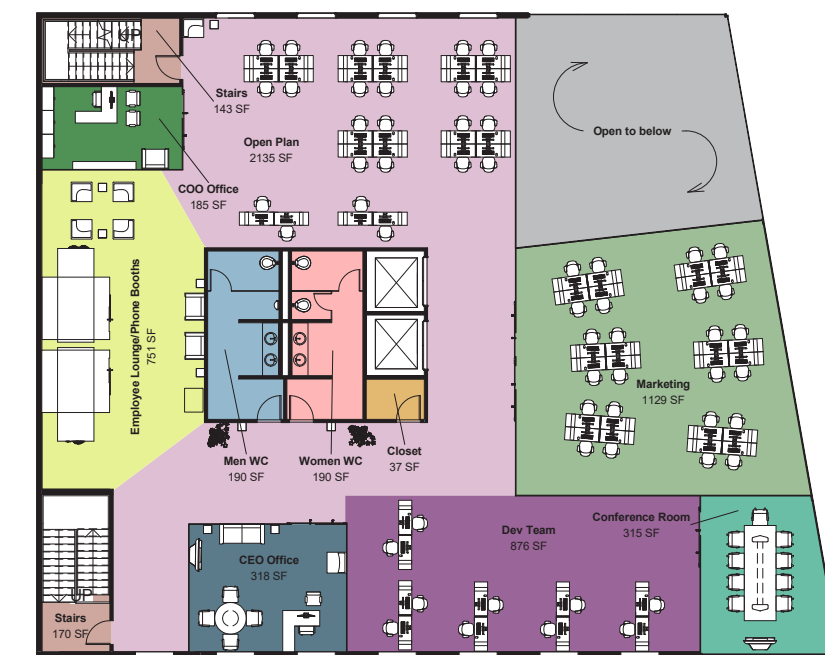
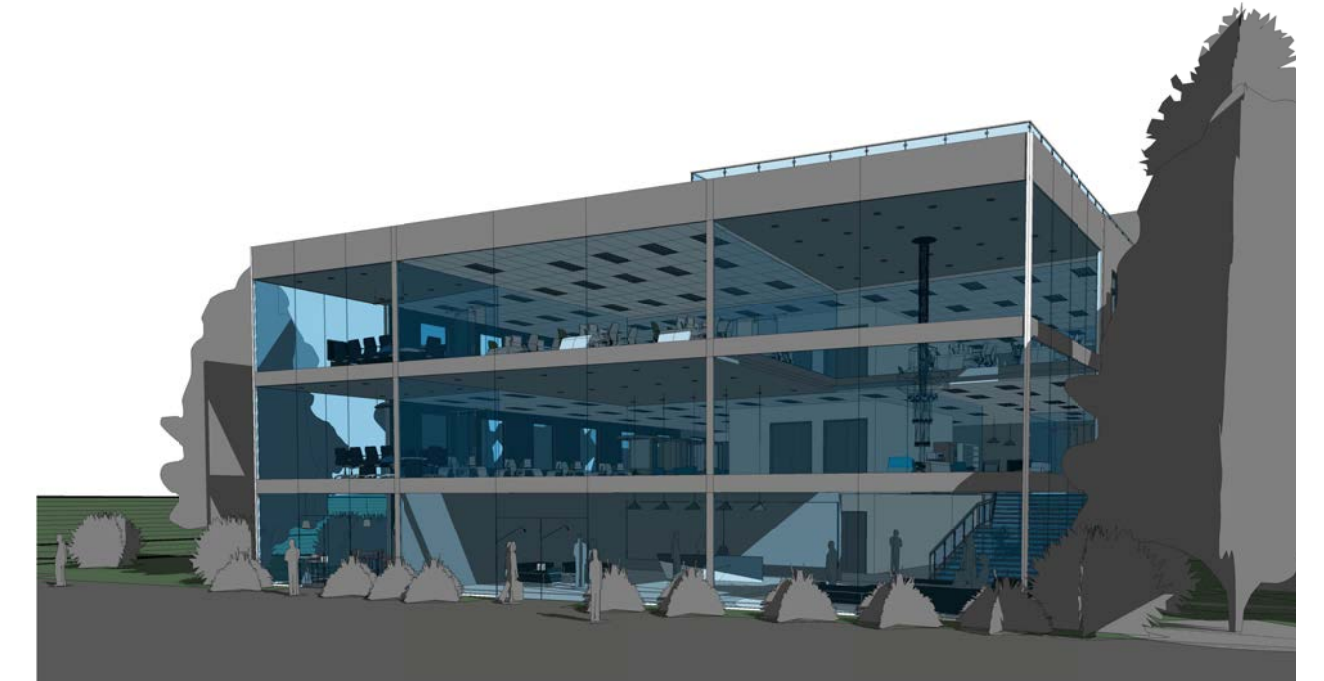
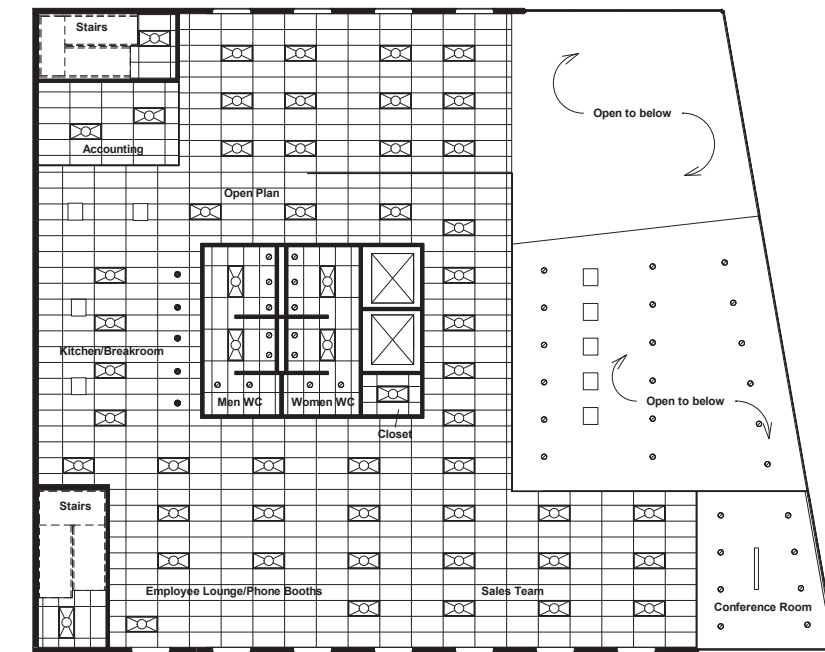
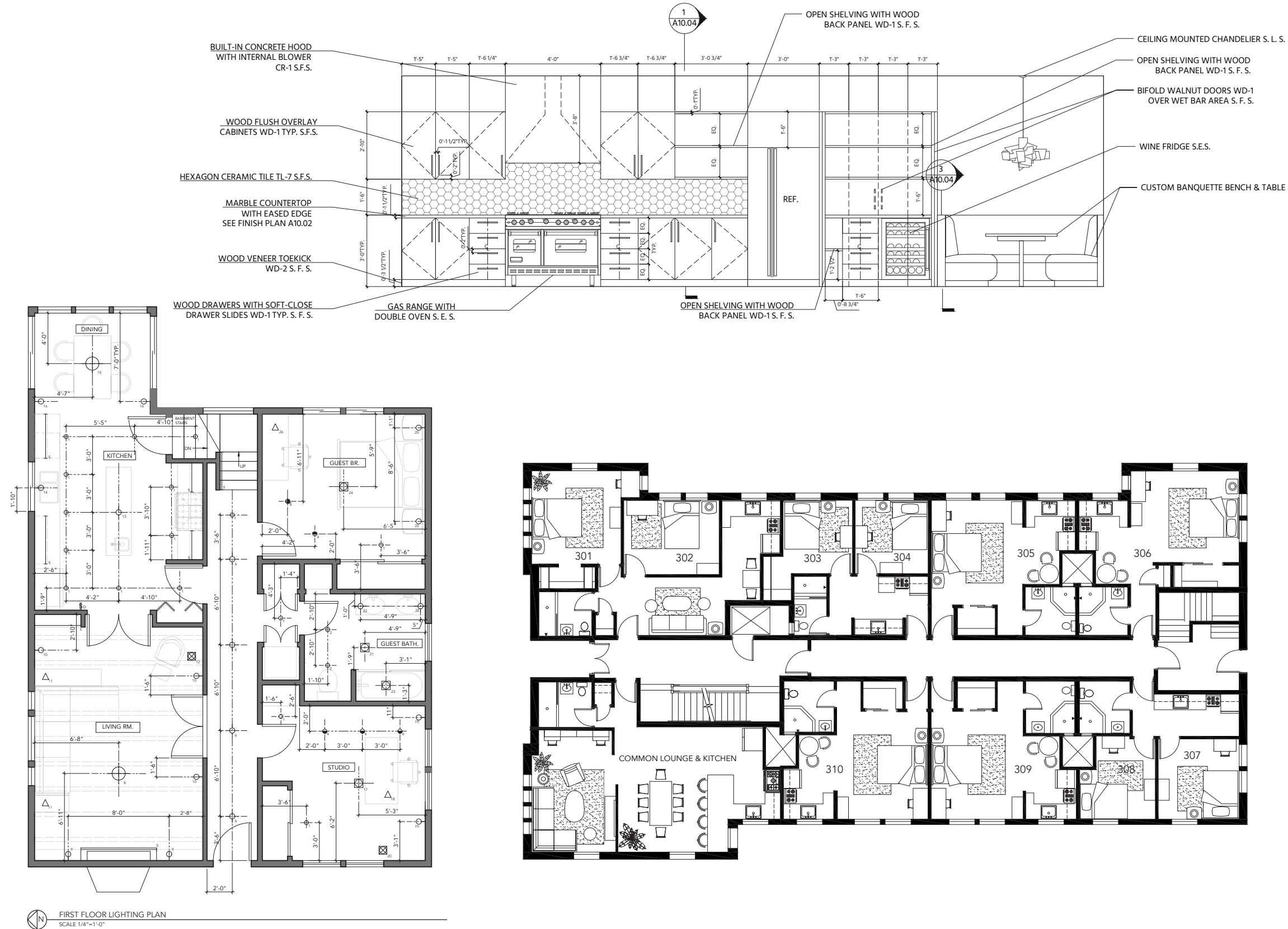


JAPANESE ONSEN SPA

ARCHITECTURAL DESIGN CONCEPT

I used a Mondrian painting as an abstract image to base my design on. Through several iterations of tracing I defined a grid and then connected intersecting points of the grid to create a pattern that I used as a basis for my design. I then experimented with paper folding techniques to transform a two-dimensional pattern into a three-dimensional form. My technique closely resembles origami which lead me to incorporate Japanese cultural elements into my final design.





SKETCHES

